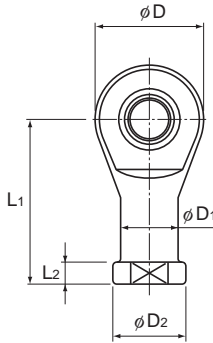


Model HS (No Lubrication, Corrosion-resistant Type)/ Build to Order



Model No.	Outer dimensions			Threaded S <sub>1</sub> JIS Class 2	Holder Dimensions					
	Length	Diameter	Width B <sub>1</sub>		W	D <sub>1</sub>	D <sub>2</sub>	B	L <sub>1</sub>	L <sub>2</sub>
	L	D	0 -0.1	0 -0.3						
HS 5	35.5	17	8	M5×0.8	9	9	11	6	27	4
HS 6	39.7	19.5	9	M6×1	11	10	13	6.75	30	5
HS 8	48	24	12	M8×1.25	14	12.5	16	9	36	5
HS 10	57	28	14	M10×1.5	17	15	19	10.5	43	6.5
HS 12	66	32	16	M12×1.75	19	17.5	22	12	50	6.5

[Material]

Holder : Aluminum alloy  
 Spherical inner ring : SUJ2, 600 Hv or higher  
 (corrosion resistant coated)  
 Bush : Special fluorine resin with fiber

[Fitting with the Shaft]

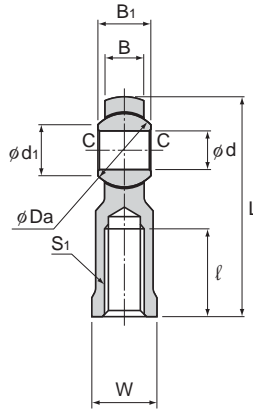
Condition	Dimensional tolerance of the shaft
Normal load	h7
Indeterminate load	n6, p6

Model number coding

**HS10 L**

Model number

Left-hand thread



Unit: mm

	Spherical inner ring dimensions					Permissible tilt angles			Static applied load Radial C <sub>s</sub> N	Yield-point strength P <sub>k</sub> N	Mass g
	l	d G7	Ball diameter Da mm (inch)	d <sub>1</sub>	C	α <sub>1</sub> °	α <sub>2</sub> °	α <sub>3</sub> °			
16	5		11.112( <sup>7</sup> / <sub>16</sub> )	7.7	0.3	7	13	30	5590	3920	9
16	6		12.7( <sup>1</sup> / <sub>2</sub> )	9	0.3	7	13	30	6860	5290	15
19	8		15.875( <sup>9</sup> / <sub>8</sub> )	10.4	0.5	8	14	25	9800	8330	26
23	10		19.05( <sup>3</sup> / <sub>4</sub> )	12.9	0.5	8	14	25	13200	10800	41
27	12		22.225( <sup>7</sup> / <sub>8</sub> )	15.4	0.5	8	13	25	16700	14700	60

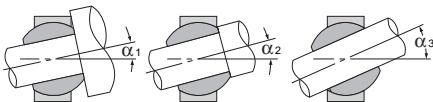
**[Clearance]**

Unit: mm

Radial clearance	0.03 or less
Axial clearance	0.1 or less

**[Identification of Left-hand Thread]**

If the female threading is left-hand, symbol "L" is added.  
The actual product is marked with symbol "L" on the holder.



Permissible Tilt Angles